



## atlas-TRIO15

The ATLAS-TRIO15 is a revolutionary solution for digital print finishing, allowing users to slit, cut, crease and even fold in a single pass. It's ideal for high-speed creasing and production of a wide range of jobs including business cards, postcards, brochures, booklet covers, greeting cards and more.

The ATLAS-TRIO15 uses an upper-belt tri-suction feeding system, and a feed table which automatically elevates, giving it the ability to process sheets up to 13" W x 27.5" L, in weights from 120-350 gsm. The 4" touchscreen control panel provides three modes for various job requirements: Preset, for the most common formats and sizes, Manual, which modifies preset jobs, and Flex mode for the greatest customization. It also stores up to 150 custom jobs, for quick and easy recall.

Production speeds vary based on media size and finished output: up to 250 business cards in under 2 minutes, single-crease jobs up to 5,000/hour. Standard features include double-feed detection, cut-mark registration, side alignment guide, skew adjustment and two standard slitting guides. Custom slitting guides are also available.

To make an even bigger impression with the printed page, the ATLAS-TRIO-15 can be combined with the optional AC-10 Folder which will easily transform large sheets into finished, six-panel brochures. This powerful combination enables users to cut the lead and trailing edges, bleed trim the top and bottom, crease and fold, for stunning professional output.

High-speed output, user friendly controls and the ability to handle large media sizes make the ATLAS-TRIO15 a great complement to today's digital print environments.

## Operating Features

**High-Speed Cutting/Slitting:** Up to eight 12" x 18" sheets per minute (24-up business cards)

**High-Speed Creasing:** Up to 5,000 letter-size sheets per hour

**Powerful Feed System:** Upper belt tri-suction feeding accurately handles large and heavy stocks

**4" Color Touchscreen:** Program and make adjustments easily with graphics-based menus and three modes - preset, manual and custom/flex

**Pre-Set and Programmable Jobs:** Up to 150 custom jobs can be saved for quick recall

**Single-Pass Processing:** Slit, cut and crease in one streamlined process

**Elevating Feed Table:** Automatically elevates to separate printed sheets to prevent misfeeds or roller marks on finished pieces

**Two Standard Slitting Guides:** For common applications including business cards, postcards and bleed trim jobs

**Cut-Mark Sensor:** Reads any image drift, then registers to ensure consistent finishing on each sheet

**Double-Feed Detection:** Avoids wasting valuable printed stock

## Creasing/Slitting Examples

**Large Format Tri-Fold:** Cut leading/trailing edges, bleed trim top & bottom, crease, fold (w/optional AC-10 Folding Unit)

**13" x 19" Sheet:** 24-up business cards, 12-up business cards with single crease, 2-up letter, 1-up ledger, 1-up single crease ledger, and more

**12" x 18" Sheet:** 24-up business cards, 12-up business cards with single crease, 4-up postcards, 1-up single crease ledger, and more

**11" x 17" Sheet:** 4-up postcard, single crease ledger



*Pair the Atlas-TRIO15 with the optional AC-10 Folding Unit to slit, cut, crease and fold in one streamlined pass*

## Options

**AC-10 Folding Unit:** Add folding to the streamlined cut/crease/slit process

**Custom Slitting Guides:** Designed to match your specific job needs

**Long Sheet Kit:** Accommodates paper sizes up to 13" W x 27.5" L

## Specifications

Speed:	24-up business cards, up to 8 sheets/minute 4-up postcards (12" x 18"), up to 10 sheets/minute 2 cut / 2 slit / 1 crease (8.5" x 11"), up to 15 sheets/minute 1 crease (8.5" x 11"), up to 5,000 sheets/hour
--------	---

Feed Capacity:	Pile height up to 4"
----------------	----------------------

Paper Sizes:	8.2" - 13" W x 8.2" - 19" L (13" W x 27.5" L with optional long sheet kit)
--------------	--

Paper Weight:	32# bond - 130# cover (120-350 gsm)
---------------	-------------------------------------

Programmable jobs:	Up to 150
--------------------	-----------

Dimensions:	33" W x 31" D x 43" H (footprint: 63" W x 31" D)
-------------	--

Weight:	440 lbs.
---------	----------

Power:	120 VAC
--------	---------

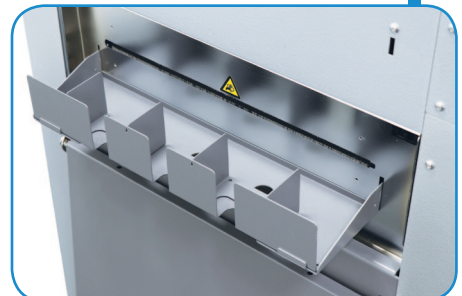
\* Speed varies depending on paper weight



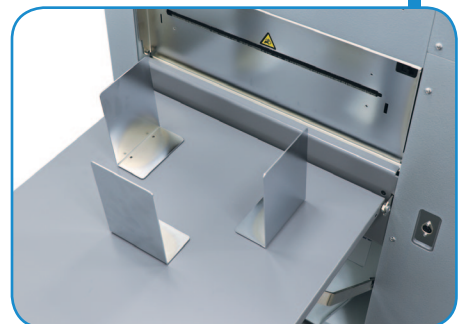
*Color touchscreen control panel*



*Upper-belt tri-suction feed system for accurate feeding of large & heavy stocks*



*Business card catch tray*



*Outfeed stacker with adjustable paper guides*

**ADVANTAGE**  
BUSINESS EQUIPMENT

[WWW.ABE-Online.com](http://WWW.ABE-Online.com)  
TEL: 800-560-2242