



	TRIUMPH 7260 programmable hydraulic	TRIUMPH 5560 LT* programmable hydraulic	TRIUMPH 5560 programmable hydraulic	TRIUMPH 6660 automatic programmable	TRIUMPH 5260 automatic programmable	TRIUMPH 6655 automatic programmable	TRIUMPH 5255 automatic programmable	TRIUMPH 4850 automatic	TRIUMPH 4815 semi-automatic	TRIUMPH 4350 automatic tabletop	TRIUMPH 4315 semi-automatic tabletop	TRIUMPH 4705 manual tabletop	TRIUMPH 4305 manual tabletop	TRIUMPH 4300 manual tabletop	
Cutting width, inches	28	21 5/8	21 5/8	25 1/2	20 3/8	25 1/2	20 3/8	18 5/8	18 5/8	16 7/8	16 7/8	18 3/4	16 7/8	16 7/8	Cutting width, inches
Cutting height, inches	3 [with and without false clamp]	3 3/4 [3 5/8 <sup>2</sup> ]	3 3/4 [3 5/8 <sup>2</sup> ]	3	3	3	3	3	3	1 1/2	1 1/2	2 3/4	1 1/2	3/4	Cutting height, inches
Narrow cut, inches	3/4 [3 1/2 <sup>2</sup> ]	1 1/4 [2 3/8 <sup>2</sup> ]	1 1/4 [2 3/8 <sup>2</sup> ]	1	1 3/8	1	1 3/8	1	1	1 3/8	1 3/8	1 3/16	1 5/16	1 1/2	Narrow cut, inches
Length behind blade, inches	28	22 7/16	22 7/16	24	20 3/8	24	20 3/8	18	18	17	17	18	17	13 3/8	Length behind blade, inches
Blade drive	electric	hydraulic	hydraulic	electric	electric	electric	electric	electric	electric	electric	electric	manual	manual	manual	Blade drive
Clamp type	adjustable hydraulic	adjustable hydraulic	adjustable hydraulic	automatic	automatic	automatic	automatic	automatic	spindle	automatic	fast-action lever	spindle	fast-action lever	fast-action lever	Clamp type
Foot pedal for pre-clamping	•	•	•	-	-	-	-	-	-	-	-	-	-	-	Foot pedal for pre-clamping
Back gauge	electric	electric	electric	electric	electric	electric	electric	manual	manual	manual	manual	manual	manual	manual	Back gauge
Manual back gauge setting mechanism	electronic hand wheel	electronic hand wheel	electronic hand wheel	electronic hand wheel	electronic hand wheel	electronic hand wheel	electronic hand wheel	calibrated hand crank	calibrated hand crank	calibrated hand crank	calibrated hand crank	calibrated hand crank	calibrated hand crank	slide with lock screw	Manual back gauge setting mechanism
Measurement indication	digital display [cm / inches]	digital display [cm / inches]	digital display [cm / inches]	digital display [cm / inches]	digital display [cm / inches]	digital display [cm / inches]	digital display [cm / inches]	digital display [cm / inches]	digital display [cm / inches]	digital display [cm / inches]	digital display [cm / inches]	front table scale [mm / inches]	side guide scale [mm / inches]	side guide scale [mm / inches]	Measurement indication
Electronic back gauge control	keypad module	touchpad module	touchpad module	touchpad module	touchpad module	touchpad module	touchpad module	-	-	-	-	-	-	-	Electronic back gauge control
Programmability	99 programs [99 steps each]	99 programs [99 steps each]	99 programs [99 steps each]	99 programs [99 steps each]	99 programs [99 steps each]	99 programs [99 steps each]	99 programs [99 steps each]	-	-	-	-	-	-	-	Programmability
Air table (front and rear)	•	•	-	-	-	-	-	-	-	-	-	-	-	-	Air table (front and rear)
Optical cutting line indicator	•	•	•	•	•	•	•	•	•	•	•	-	-	-	Optical cutting line indicator
Front table safety element	IR light beam safety curtain	IR light beam safety curtain	IR light beam safety curtain	IR light beam safety curtain	IR light beam safety curtain	electronic, transparent guard	electronic, transparent guard	electronic, transparent guard	electronic, transparent guard	electronic, transparent guard	electronic, transparent guard	transparent guard	transparent guard	transparent guard	Front table safety element
3-step front table illumination	-	-	-	•	•	-	-	-	-	-	-	-	-	-	3-step front table illumination
Patented EASY CUT blade activation bars	•	•	•	•	•	•	•	•	•	•	•	-	-	-	Patented EASY CUT blade activation bars
Drop-in tool holder on rear table	•	•	•	•	•	•	•	•	•	-	-	-	-	-	Drop-in tool holder on rear table
Optional accessories	side tables	side tables	side tables	side tables	side tables	side tables	side tables	side tables	side tables	stand or cabinet	stand or cabinet	stand	stand or cabinet	stand or cabinet	Optional accessories
Electrical requirements	220 V, 3 phase	115 V, 60 Hz <sup>4</sup>	115 V, 60 Hz <sup>4</sup>	115 V, 60 Hz <sup>4</sup>	115 V, 60 Hz <sup>4</sup>	115 V, 60 Hz <sup>4</sup>	115 V, 60 Hz <sup>4</sup>	115 V, 60 Hz <sup>4</sup>	115 V, 60 Hz	115 V, 60 Hz	115 V, 60 Hz	-	-	-	Electrical requirements
Motor output, horsepower	2	2	2	2	2	2	2	2	1.5	0.6	0.6	-	-	-	Motor output, horsepower
Dimensions [D x W x H], inches	60 1/2 [63 <sup>2</sup> ] x 51 3/8 [82 1/2 <sup>2</sup> ] x 52 1/2	55 x 42 [64 <sup>2</sup> ] x 54	55 x 42 [64 <sup>2</sup> ] x 54	48 x 39 [61 1/2 <sup>2</sup> ] x 51	44 x 33 7/8 [56 1/2 <sup>2</sup> ] x 51	48 x 39 [61 1/2 <sup>2</sup> ] x 51	44 x 33 7/8 [56 1/2 <sup>2</sup> ] x 51	41 1/2 x 30 [53 <sup>2</sup> ] x 51	41 1/2 x 30 [53 <sup>2</sup> ] x 55 1/2	34 1/4 x 25 x 14 [42 3/4 <sup>1</sup> / 42 1/2 <sup>2</sup> ]	34 1/4 x 25 x 14 [42 3/4 <sup>1</sup> / 42 1/2 <sup>2</sup> ]	35 x 39 x 23 [50 <sup>1</sup> ]	34 5/8 x 34 5/8 x 15 3/4 [45 1/4 <sup>1</sup> / 44 <sup>2</sup> ]	22 1/2 x 28 x 18 1/2 [47 1/2 <sup>1</sup> / 46 3/4 <sup>2</sup> ]	Dimensions [D x W x H], inches
Shipping weight, pounds	1,534 [1,622 <sup>2</sup> ]	1,014 [1,052 <sup>2</sup> ]	970 [1,008 <sup>2</sup> ]	775 [796 <sup>2</sup> ]	657 [677 <sup>2</sup> ]	772 [793 <sup>2</sup> ]	648 [669 <sup>2</sup> ]	556 [577 <sup>2</sup> ]	531 [552 <sup>2</sup> ]	200 [226 <sup>1</sup> / 295 <sup>2</sup> ]	191 [217 <sup>1</sup> / 286 <sup>2</sup> ]	297 [320 <sup>1</sup> ]	115 [141 <sup>1</sup> / 210 <sup>2</sup> ]	95 [121 <sup>1</sup> / 190 <sup>2</sup> ]	Shipping weight, pounds

\*available by special order only

<sup>1</sup> with stand <sup>2</sup> with cabinet <sup>3</sup> with side tables <sup>4</sup> 20 amp, dedicated line required <sup>5</sup> with false clamp



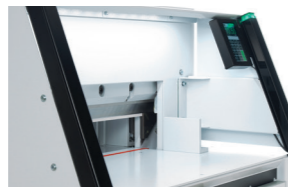
**AIR TABLE**

Front and rear table air jets allow easy handling of large paper stacks (models 5560 LT\*, 7260).



**PROGRAMMABLE BACK GAUGE**

The 7260 has a programmable back gauge control module capable of storing 99 programs with 99 steps each in memory.



**IR SAFETY CURTAIN**

The IR light beam safety curtain covers the work area to ensure the highest level of operator safety.



**EASY-TO-USE TOUCHPAD**

A multilingual, programmable touchpad module controls the back gauge on models 5255-5560 LT.



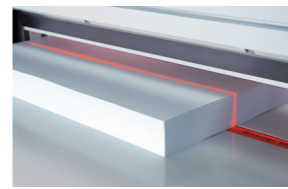
**ELECTRONIC HAND WHEEL**

The electronic hand wheel, with infinitely variable speed control, is used for manual back gauge setting (models 5255 and above).



**FRONT TABLE DIGITAL DISPLAY**

A digital measurement display allows precise positioning of back gauge (models 4315-4850).



**OPTICAL CUTTING LINE**

The optical cutting line indicator with bright LEDs ensures perfect alignment of cutting marks (models 4315 and above).



**EASY CUT BLADE ACTIVATION BARS**

Patented EASY CUT blade activation bars provide true two-hand operation (models 4315 and above).



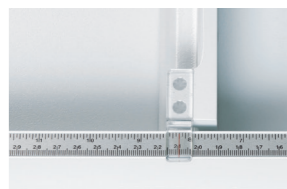
**SAFE BLADE CHANGE**

Blade changes can be made without removing the machine covers. The handy blade changing device covers the cutting edge of blade.



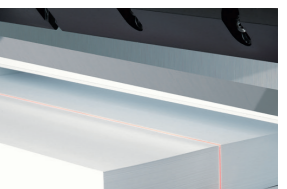
**FAST-ACTION CLAMP**

Throw the lever on the fast-action clamp to tighten, then cut (models 4300, 4305, 4315).



**SIDE GUIDE BACK GAUGE SCALE**

A measurement scale on the side guide ensures precise back gauge setting (models 4300, 4305).

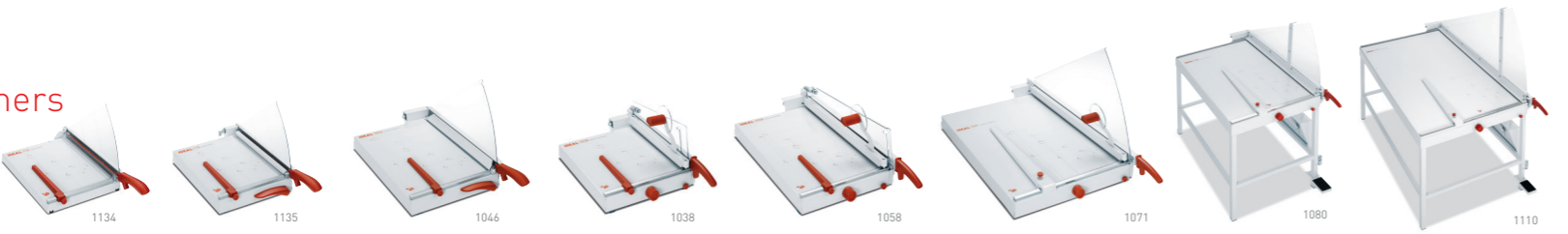


**HIGH QUALITY BLADES**

All Triumph cutter models feature high quality, German steel blades.

Model overview

TRIUMPH trimmers



	TRIUMPH 1134	TRIUMPH 1135	TRIUMPH 1046	TRIUMPH 1038	TRIUMPH 1058	TRIUMPH 1071	TRIUMPH 1080	TRIUMPH 1110
Cutting length, inches	13 3/4	13 3/4	18	15	22 1/2	28 1/2	31 1/2	43 1/4
Sheet capacity, 8 1/2" x 11" 20 lb. bond <sup>1</sup>	25	25	30	50	40	40	20 (5/32" cutting height)	20 (5/32" cutting height)
Resharpenable blades	•	•	•	•	•	•	•	•
Clamp type	manual	automatic / EASY-LIFT	automatic / EASY-LIFT	manual	manual	manual	foot pedal	foot pedal
Blade guard	stationary	stationary	stationary	automatic	automatic	stationary	stationary	stationary
Side guide with measurement scale	•	•	•	•	•	•	•	•
Adjustable back gauge	•	•	•	•	•	•	•	•
Front gauge	-	-	-	•	•	•	•	•
Cut line indicator	•	•	•	-	-	-	-	-
Rotary knob for front gauge adjustment	-	-	-	•	•	•	•	•
Fold-away paper supports	-	-	-	•	•	•	-	-
Narrow strip cutting device	-	-	-	•	•	•	•	•
Solid all-metal construction	•	•	•	•	•	•	•	• (machine frame)
Table size (D x W), inches	15 x 12	15 x 12	20 x 14	16 x 14 1/4	23 3/4 x 14	30 x 20	31 1/2 x 23 7/8	43 1/4 x 30
Dimensions (D x W x H), inches	22 1/4 x 13 1/4 x 12	23 x 13 3/8 x 12 3/4	27 1/2 x 15 1/4 x 15	23 x 15 1/2 x 10	31 x 16 x 10	38 1/2 x 22 1/4 x 20 1/2	42 1/2 x 26 1/4 (35") x 48	54 3/4 x 32 1/2 (41 3/4") x 53 1/2
Shipping weight, pounds	11	13	24	29	42	62	158	182

<sup>1</sup> may vary due to variations in paper <sup>2</sup> fold-away extension table in working position

Model overview

TRIUMPH rotary trimmers



	TRIUMPH 1030	TRIUMPH 1031	TRIUMPH 0055	TRIUMPH 0075	TRIUMPH 0105 U	TRIUMPH 0135	TRIUMPH 0155
Cutting width, inches	13	17	21 1/2	29 1/2	41 1/4	53	61
Capacity (sheets) or cutting height (inches) <sup>1</sup>	5-6 sheets (20 lb. bond)	5-6 sheets (20 lb. bond)	1/32 inch	1/32 inch	1/32 inch	1/32 inch	1/32 inch
Automatic bar clamp	•	•	•	•	•	•	•
Safety cutting head	•	•	•	•	•	•	•
Hardened steel, self-sharpening blade	•	•	•	•	•	•	•
Open side brackets for oversized formats	-	-	•	•	•	•	•
Cutting table construction	ABS	ABS	custom aluminum extrusion	custom aluminum extrusion	custom aluminum extrusion	sheet metal	sheet metal
Cutting table measurement system	bracket and table pattern (mm)	bracket and table pattern (mm)	measurement scale (mm)	measurement scale (mm)	measurement scale (mm)	measurement scale (mm / inches)	measurement scale (mm / inches)
Tabletop model with non-slip rubber feet	•	•	•	•	-	-	-
Metal stand with collection tray	-	-	-	-	•	•	•
Table height, inches	-	-	-	-	35 1/2	34	34
Color	white / black	white / black	natural aluminum / white	natural aluminum / white	natural aluminum / white	light gray / medium gray	light gray / medium gray
Table size (D x W), inches	6 1/2 x 13	6 1/2 x 17	11 x 23	11 x 29 1/2	11 x 41 1/4	11 1/2 x 34	11 1/2 x 61
Dimensions (D x W x H), inches	8 x 18 3/4 x 2 3/8	8 x 22 1/2 x 2 3/8	15 x 31 1/2 x 4 1/4	15 x 39 1/4 x 4 1/4	15 x 51 x 38	19 x 60 1/2 x 37	19 x 68 1/2 x 37
Shipping weight, pounds	2	2 1/2	13 1/2	16	46	84	88

<sup>1</sup> may vary due to variations in paper

All technical data is approximate and subject to change. © MBM Corporation, 8/2018

Award Winning  
**VRCUT**<sup>TM</sup>  
CUT WITH CONFIDENCE

With VRCut Ready Triumph Cutters, operators of any experience level can use cutters accurately and efficiently without lengthy training or ramp up programs, allowing businesses to increase operation speed and efficiency while reducing operating costs and waste.

VRCut is a groundbreaking PC software solution designed to automate the cutting workflow by promoting an efficient and error-free cutting process from start to finish. VRCut intelligently bridges the gap between pre-press and the finishing process, allowing operators of any experience level the ability to cut with confidence on select Triumph cutters.



**ADVANTAGE**  
BUSINESS EQUIPMENT

1-800-560-2242  
sales@abe-online.com



PAPER CUTTERS AND TRIMMERS